



**Conference and
Challenge Competition**



JUNE 11-16, 2023

Siddons-Martin Emergency Group



**Wheeled
Coach®**

BRAUN
CUSTOM AMBULANCES
Built for Life.



DEMERS
AMBULANCES



Road Rescue



(800) 784-6806

www.Siddons-Martin.com



Rescue Tools & Fire Equipment



- Holmatro Rescue Tool Sales & Service
- Extensive Local Equipment Inventory
- Custom Poly Mounting, Cargo Boxes & Storage
- Mobile Service, Training and Support



holmatro
mastering power



LET US QUOTE YOUR NEXT EQUIPMENT PURCHASE. CONTACT US TODAY TO LEARN MORE.



Wednesday, May 31, 2023

Greetings!

Welcome to the 2023 IRECA/TEEX Annual Conference & Challenges, again held in conjunction with the world-class Brayton Fire Training Field at the Texas A&M Engineering Extension Service, better known as TEEEX. This year is extremely significant to the association, as we celebrate 75 years together, a milestone that not many can claim! The conference committee, spearheaded by Gary Leafblad and Sean Ahlers, have been working diligently to provide you, the attendees, with an equally world-class conference and are trying some new things this year based on feedback received after last year's event. Please continue to provide us with your feedback, as we can't grow to new heights without your help and support.

While many of our association and conference staff are returning alumni, we also have some new faces this year to introduce to you. After spending years as competitors, Chris "Shaggy" Williams and Stephanie "Funk" Hyatt return as our Technical Rescue co-chairs, and we look forward to continuing the forward progress, growing and refining our education and challenge event offerings with their help. Also, a returning competitor in the Basic Life Support Challenge, Candi Mikel, is the 2023 conference intern, assisting with challenge event logistics primarily. Please welcome them and introduce yourselves when you see them!

This year we also celebrate three of our longest tenured members for their profound impact they've had on the International Rescue & Emergency Care Association over their lives. Sherrie Zabriskie, our outgoing Executive Secretary, and her husband Steve, our Mid-Atlantic Vice President have been members of the association for over 25 years. Jim Miller has been a member since the mid-1970's and served as President of the association from 1986-1989. Jim has remained active in his role as a Past President, and we celebrate all three of these individuals for the remarkable impacts both on the association as well as our members!

Please enjoy this year's conference and thank you for being a member of this outstanding organization. Please mark your calendars for the 2024 conference, which we intend to hold, tentatively, June 9-14, 2024.

Safe travels & best of luck to all competitors!

Alex Villarreal, Jr
President

TEXAS A&M ENGINEERING



EXTENSION SERVICE

Welcome to the TEEX-ESTI Disaster City® Rescue Campus. Our Rescue Campus is a cutting-edge Special Operations and Rescue Training Facility, where you'll experience immersive simulations and realistic scenarios. Our expert instructors guide you through comprehensive training programs covering rescue emergencies, special operations, and more. With access to state-of-the-art equipment, you'll develop the mental and physical skills necessary for complex rescue operations. Engage in team exercises to foster collaboration and teamwork, vital in emergency situations. Join us in creating skilled and confident first responders who are ready to make a difference in the lives of others.

Scott Salter

TEEX Rescue Program Director



www.teex.org

BE THE MATCH[®]

In 2011 I signed up to be on the Be The Match registry. With just a little info from me and a simple mouth swab I was all set to potentially be a match. 6 years later I received one of the most exciting phone calls asking if I would be willing to donate bone marrow to someone in need. Without any hesitation I was all in to do what I could to help. After a physical to make sure I was healthy and blood draw I was now ready. A simple surgical procedure of removing bone marrow from my hips was all they needed to do to save someone's life. Just a couple hours later I was discharged from the hospital. Knowing I had the chance to save someone's life with only a small procedure is one of the most rewarding things I've had the opportunity to do.

-Karl Entleunter



**I'M COMMITTED
TO SAVING A LIFE**

www.bethematch.org



Thank you to our 2023
SPONSORS



2023 PARTNERS





Advancing Resuscitation. Today.™

Marcos Villarreal

EMS CPR Territory Manager – TX/LA

M : 210-202-7696 text/cell

Marcos.villarreal@zoll.com

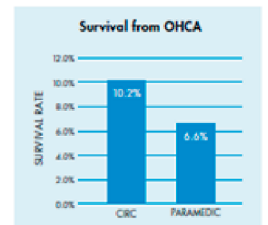


IT'S ALL ABOUT OUTCOMES

Numerous studies comparing the AutoPulse to manual CPR clearly demonstrate its many benefits for patients. And by every important measure of resuscitation success, the AutoPulse outperforms piston-driven mechanical CPR devices.

Highest reported survival for all rhythms

Among the large prospective clinical trials that have been published using an automated CPR device, the AutoPulse has achieved the highest survival rate. In the CIRC (Circulation Improving Resuscitation Care) trial, the overall survival-to-discharge rate was 10.2%—among the highest ever achieved in an out-of-hospital cardiac arrest (OHCA) trial.² The PARAMEDIC trial, which used a piston-driven mechanical CPR device, had a 30-day survival rate of just 6.6%.³



At 10.2%, survival in the CIRC trial was among the highest ever achieved in an OHCA trial.² Survival in the PARAMEDIC trial was just 6.6%.³

Enhanced circulation

Multiple comparative studies have demonstrated improved vital signs because the AutoPulse drives superior blood flow, resulting in coronary perfusion pressure levels 33% higher than those of sternal compressions, positively impacting ROSC and survival.

Unmatched impact on ROSC

While piston-driven sternal CPR devices have shown no benefit in improving ROSC rates when compared to manual CPR,⁴ the AutoPulse has increased ROSC rates in numerous studies.⁵⁻¹⁰

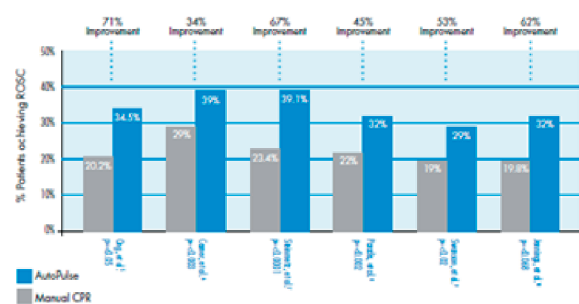
THE AUTOPULSE ADVANTAGE

The AutoPulse Resuscitation System works wherever EMS providers need to go.

At its foundation is the specially designed board. It delivers stability and maneuverability, supporting both patient and rescuer from the scene of the rescue to the hospital. Depending on the situation, the rescuer has the option of securing the AutoPulse board to a soft stretcher or a backboard.

A 2015 study demonstrated the ability of the AutoPulse to limit interruptions in CPR while moving the patient. With regular training, the AutoPulse was applied in as little as 14 seconds, and the median time of overall interruption in CPR during patient movement from scene to the ambulance was reduced by over 85% compared to using manual CPR alone.¹

AutoPulse drives ROSC rates up



Multiple trials confirm the AutoPulse is superior to manual CPR when it comes to increasing a patient's odds of achieving ROSC.

Vallen Safety Services offers inspection, testing & maintenance, safety rentals, turnaround services, training, instrumentation, fire equipment, fall protection, safety showers, eyewashes and more.



Safety Services

2023

SCHEDULE OF EVENTS

**SUNDAY
6/11**

0900-1130 @ The Stella Hotel : Conference Registration & Check-In
1300-1400 @ The Stella Hotel : Conference Kick-Off Session
1400-1530 : Challenge Participant Orientation Session
1600-1730 @ The Stella Hotel : IRECA Full Board Meeting
1730-1830 @ The Stella Hotel : BLS Captains & Judges Meeting

**MONDAY
6/12**

0500-0800 @ The Stella Hotel : IRECA Breakfast
0600-0900 @ TEEX : Physical Fitness Challenge
0800-0930 @ TEEX : Basic Life Support (BLS) Orientation
1000-1400 @ TEEX : Basic Life Support (BLS) Challenge
1300-1700 @ TEEX : Rescue Education Equipment Demo
1730-1830 @ The Stella Hotel : FRR Captains & Judges Meeting
1830-2100 @ The Stella Hotel : Welcome Reception

**TUESDAY
6/13**

0500-0800 @ The Stella Hotel : IRECA Breakfast
0600-1500 @ TEEX : First Response Rescue Challenge
0800-0945 @ TEEX : Auto Extrication (AE) Challenge Orientation
1000-1145 @ TEEX : Tool Time in the Pits!
1300-1700 @ TEEX : Auto Extrication (AE) Equipment Demo
1830-2100 @ The Stella Hotel : President's Reception

**WEDNESDAY
6/14**

0500-0800 @ The Stella Hotel : IRECA Breakfast
0600-1500 @ TEEX : First Response Rescue Challenge
0800-1500 @ TEEX : Auto Extrication (AE) Challenge
1700-1830 @ The Stella Hotel : FRR Recap & Review Session
1730-1930 @ The Stella Hotel : TR Captains & Judges Meeting
1930-2100 @ The Stella Hotel : BLS Recap & Review Session

0500-0800 @ The Stella Hotel : IRECA Breakfast
0600-1700 @ TEEEX : Technical Rescue Challenge
0800-1300 @ TEEEX : Auto Extrication (AE) Challenge
1400-1530 @ TEEEX : Auto Extrication Recap & Review Session
1800-1930 @ The Stella Hotel : IRECA General Business Meeting

THURSDAY
6/15

0500-0800 @ The Stella Hotel : IRECA Breakfast
0600-1300 @ TEEEX : Technical Rescue Challenge
0900-1300 @ The Stella Hotel : Hotel & CVB CPR Course
1500-1630 @ The Stella Hotel : Technical Rescue Recap & Review
1800-2100 @ The Stella Hotel : Memorial Service, Banquet & Awards

FRIDAY
6/16

0500-0830 @ The Stella Hotel : IRECA Breakfast
0600-1000 @ The Stella Hotel : Conference in Review Session

SATURDAY
6/17

THE STELLA HOTEL | 4100 Lake Atlas Dr, Bryan, TX 77807

TEEX | 200 Technology Way, College Station, TX 77845



Thank you to our 2023

TRAINING PARTNERS



SILVERBACK RESCUE

ALL
LIFE



SILVERBACK
SAFETY SERVICES



TRIBALCO

 **TribalCo**
RESCUE AND SAFETY



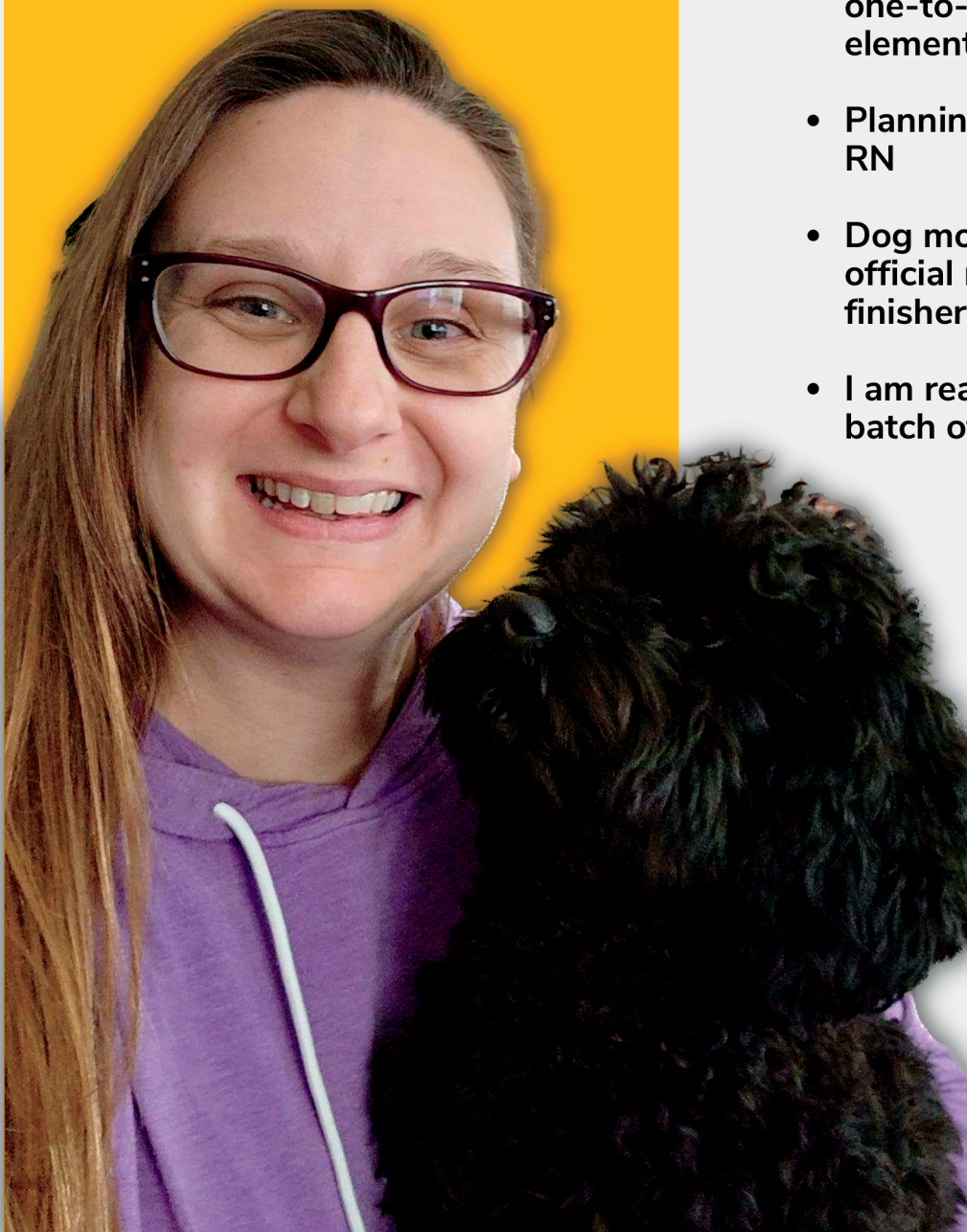
VERTICAL INTEGRITY



Welcome To Our
INTERN SPOTLIGHT

CANDI MIKEL

- EMT-B for the last 18 years and competed at IRECA in the summer of 2004
- Currently have my LPN and work as a one-to-one school nurse at an elementary school
- Planning to return to school to get my RN
- Dog mom and as of January 2023, an official marathon and Dopey Challenge finisher
- I am really good at baking a yummy batch of cookies!





Welcome to College Station!

Welcome members of IRECA and good luck with your challenges this week! On behalf of the College Station community, I would like to extend a warm welcome to you! We are thrilled to have you visit our city and during your stay, we hope you will have the opportunity to experience all that College Station has to offer. and hope that your time here will be enjoyable and memorable.

College Station is a vibrant city with much to offer. As the home of Texas A&M University, we take great pride in our rich history and traditions. Whether you visit the landmark George H.W. Bush Presidential Library and Museum, one of our numerous local restaurants, or you get to experience our nightlife, we are confident that you will find something to suit your interests.

As you explore our city, we encourage you to take advantage of our many resources and amenities by scanning the QR Code below you will be able to access various discounts at local businesses through the Heart of Aggieland Visitor Pass.

Once again, welcome to College Station! We hope that your visit is filled with fun and adventure, and that you leave with fond memories and a desire to return.

More information is available to you at the City of College Station Visitors Center:
1207 Texas Avenue South
College Station, TX 77840

Jeremiah Cook
Tourism Manager

DESTINATION
**BRYAN
TEXAS**
A Legend Reborn

IRECA Participants and Attendees,

Howdy! I would like to personally welcome you to the 2023 International Rescue & Emergency Care Association/TEEX Annual Conference and Challenges in Bryan, Texas. Born of converging cultures and built on deep Texas roots, Bryan is a community filled with real people, authentic places, and legendary stories. We are ever evolving while staying true to our Texas spirit.

During your time in Bryan, we encourage you to take time to discover our Legends and what makes Bryan unique. Explore some of these opportunities for yourself, such as the revitalized Historic Downtown Bryan where our legendary stories converge with a thriving arts scene, top-rated restaurants and bars, signature events, and shopping; Catalena Hatters where the same family has been handcrafting custom hats since 1983; The Kyle House and Polite Coffee Roasters where real friendly coffee is roasted and served in a historic home; The Queen Theatre, an iconic Downtown Bryan landmark; Ronin Farm & Restaurant where Chef Brian and Amanda Light have built a legendary farm-to-table concept featuring family farm cuisine with a constantly evolving menu; and, Messina Hof Winery which was founded in 1977 and has become the most awarded winery in the state. You can find these stories and more things to do in Bryan during your visit at www.destinationbryan.com.

Throughout the week, we know you will truly enjoy your time in Bryan, Texas. Our city's hospitality is second to none and our residents are always ready to welcome visitors. Having attendees from all of the country as part of our community for a week and is our honor. We hope you carry your wonderful experience back home with and come back to visit again in the future.

Best Regards,

Morgan Key

Business Development Manager, Destination Bryan

IRECA EXECUTIVE BOARD



Alex Villareal
Current President



Byrd Reed
President Elect



Kevin Ward
1st Vice President



Obie Cambrie
2nd Vice President



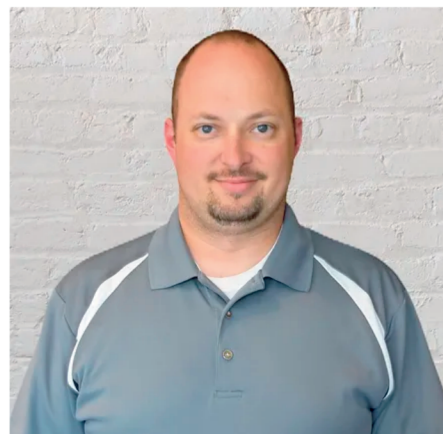
Randy Tanner
Immediate Past President



Gary Leafblad
Conference Chair



Jim Miller
Past President



Sean Ahlers
Conference Director



Sherrie Zabriskie
Executive Secretary



IRECA FULL BOARD

Steve Carrolll | Southwest Vice President
Kyle Devall | Gulf Shore Vice President
Dave Dolnick | North Atlantic Vice President
Rhett Lormand | Southeast Vice President
Kris Pollio | Rescue At-Large
Arlene Presley | Midwest Vice President
Marlo Reyes | West Vice President
Jessica Tanner | Marketing
Paul Wilson | EMS At-Large
John Winkelman | International Vice President
Steve Zabriskie | Mid-Atlantic Vice President

CHALLENGE EVENT CHAIRS

Obie Cambire | First Response Rescue Co-Chair
Stephanie Hyatt | Technical Rescue Co-Chair
Robert "Byrd" Reed | FR Rescue Co-Chair & IRECA Physical Fitness Chair
Erwin Villar | Basic Life Support Chair
Matt Wallace | Auto Extrication Chair
Christopher "Shaggy" Williams | Technical Rescue Co-Chair

IRECA/TEEX CHALLENGES

JUNE 11-16, 2023

TECHNICAL RESCUE

THE TECHNICAL RESCUE CHALLENGE TRAINS AND ASSESSES EACH TEAM WITH THEIR KNOWLEDGE AND SKILLS TO PERFORM A TECHNICAL RESCUE WITH A 7-PERSON TEAM, USING A MINIMAL AMOUNT OF EQUIPMENT TO ACHIEVE A SAFE AND SUCCESSFUL RESCUE OUTCOME.

FIRST RESPONSE RESCUE

THE FIRST RESPONSE RESCUE CHALLENGE COMBINES THE MEDICAL SKILLS OF BLS CHALLENGE WITH THE RESCUE SKILLS OF TECHNICAL RESCUE. IT IS DESIGNED TO TRAIN AND CHALLENGE 4-RESCUER ENGINE COMPANIES THAT ARE LIKELY TO BE FIRST ON THE SCENE BEFORE THE TECHNICAL RESCUE TEAMS ARRIVE.

AUTO EXTRICATION

THE AUTO EXTRICATION CHALLENGE IS DESIGNED TO TEACH AND ASSESS 4- AND 6-PERSON FIRE/RESCUE TEAMS ABILITY TO SUCCESSFULLY COMPLETE EXTRICATION SCENARIOS WITH ATTENTION TO SAFETY FEATURES OF THE EVOLVING AUTOMOBILE INDUSTRY AND BEST PRACTICES, WHILE PROVIDING COMPETENT AND APPROPRIATE MEDICAL CARE DURING AN EXTRICATION EVENT.

BASIC LIFE SKILLS

THE BASIC LIFE SUPPORT (BLS) CHALLENGE TRAINS AND ASSESSES EACH 3-PERSON EMT/EMR TEAM WITH THEIR SKILLS AND KNOWLEDGE TO PERFORM MEDICAL AND/OR TRAUMA SCENARIOS SIMILAR TO THOSE ENCOUNTERED BY AN AMBULANCE CREW RESPONDING TO A 911 EMERGENCY THROUGH THE TRANSFER OF CARE AT A RECEIVING FACILITY.

PHYSICAL FITNESS

THE PHYSICAL FITNESS CHALLENGE IS GEARED TOWARDS PUSHING INDIVIDUAL COMPETITORS TO THEIR PHYSICAL LIMITS BY PERFORMING MEDICAL AND RESCUE SKILLS UNDER TIMED CONDITIONS.

WWW.IRECA.ORG



SAME DURABILITY LIGHTER WEIGHT

NEW rescue tools available

AMKUS[®]
RESCUE SYSTEMS



WWW.AMKUS.COM

**2024 IRECA/TEEX
ANNUAL CONFERENCE
& CHALLENGES**

**JUNE 16-21
2024**

**BRYAN-
COLLEGE STATION**

SAVE

THE

DATE



PETZL RESCUE SOLUTIONS

Petzl offers a broad range of equipment for rescue professionals and teams. Whether you're on a wilderness, urban, or industrial rescue team, our gear is ready to take on any situation.

Team rescue kits need to be strong enough for 2-person loads, resilient enough for rugged terrain, yet light enough to carry into a remote area. We offer a complete line up of products, including helmets, pulleys, descenders, ropes, harnesses, and much more. Our versatile and efficient rescue gear is a must-have for rescue professionals.

Petzl.com



To learn more, receive a demo, or discuss purchasing options, contact Troy Wilson at troywilson@tech@gmail.com





A PROUD SPONSOR OF
**THE 2023 IRECA / TEEC ANNUAL
CONFERENCE AND CHALLENGES**

CMCPRO.COM